

VERSATILE STYLE

Sabal Homes by Hopewell introduces rear-attached garage homes in Mahogany

Sabal Homes by Hopewell has built a name on the uncommonly stylish designs of their homes, and the distinguished, multi-awarded builder is at it again with the introduction of their new line of rear-attached garage single-family homes in Mahogany.

Home buyers have long wanted a single-family home that offers the convenience of an attached garage but with a more street-friendly façade; one that shows more of the home instead of just the carport and a driveway. Sabal's rear-attached garage homes — which were launched this September — do just that.

Now, homeowners can actually have a front yard with big front windows on the main floor that they can look out from, and still enjoy the convenience of a garage that they can access from inside the house.

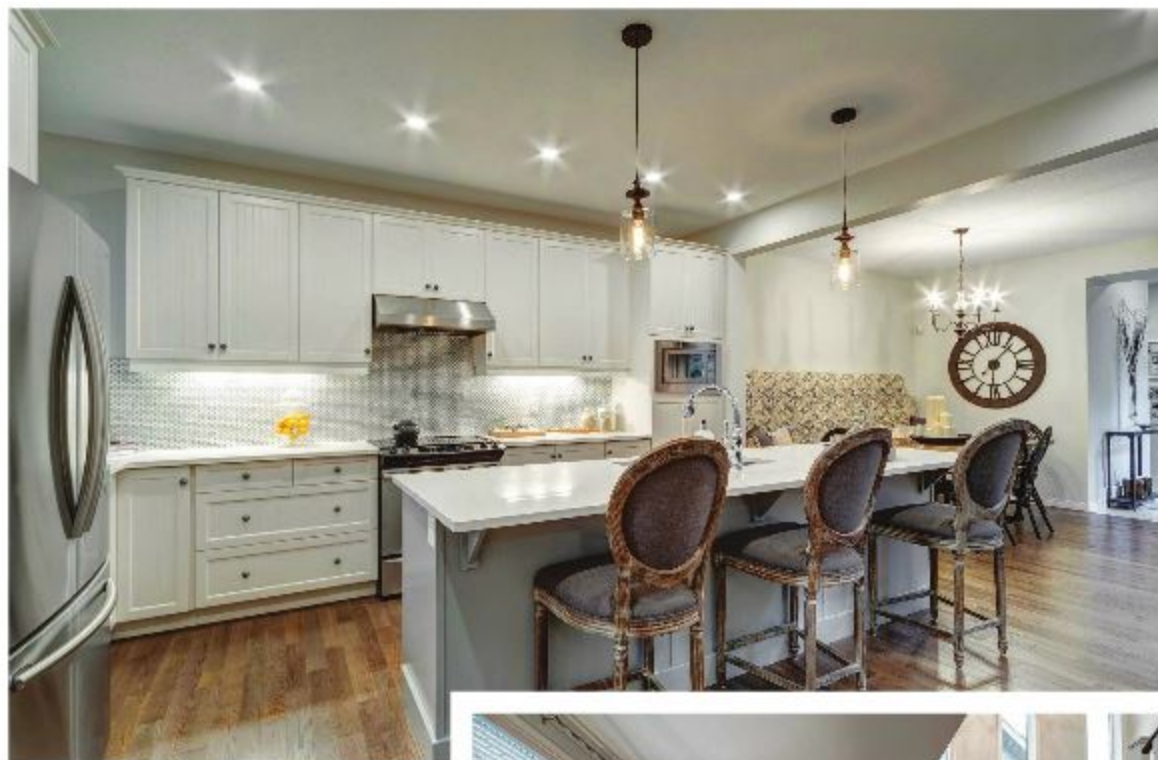
"Mahogany's unique master plan has afforded some phenomenal opportunities to work with City zoning to create different home styles that are in demand among buyers," says Sabal Homes' marketing manager for housing, Amanda Henderson.

"In this particular case we listened to buyers who were looking for a home that took full advantage of a lower-maintenance lifestyle without compromising size or design, with a character facade and attached garage."

All of Sabal Homes' rear-attached garage homes even feature a prominent side-courtyard, which present a "unique indoor/outdoor sense of living in a community which prides itself on a four-season lifestyle," Henderson adds.

"These are homes for people who want a great design and a home that wows people from the moment they step through the front door with a house that offers creativity, style and a sense of individuality."

Sabal opened three show homes to launch this brand new product line on September 6. All are three-bedroom, two-and-a-half-bath models that range from 1,877 to 2,104 square-feet.



The show homes include: Triumph, a 1,877 square-foot model that features a traditional central foyer, and a main floor flex room. Encore is at 2,104 square-feet and features a second floor entertainment room, and a spacious master suite. While Aria will be the largest available model at 2,154 square-feet and includes a large side courtyard that flows naturally from the kitchen inside and making a perfect spot for outdoor entertaining.

The line will also include Evoke, which is at 1,893 square-feet and features a large front porch, as well as a side yard with a covered patio leading into the courtyard. There is also Cameo, at 2,060 square-feet and features two outdoor living areas, a covered patio off the dining room and a second larger courtyard.

Lots for the rear-attached homes range from 32- to 34-feet wide, which Henderson says fits the gap between the laned and front-garage lot sizes. >>



"These are homes for people who want a great design and a home that wows people from the moment they step through the front door with a house that offers creativity, style and a sense of individuality."



FAST FACTS:

BUILDER: Sabal Homes by Hopewell
COMMUNITY: Mahogany
DEVELOPER: Hopewell Residential
STYLE: Two-story rear-attached homes
SIZE: Starts from 1,877 sq. ft.
PRICE: Starts from the \$520,000s
ADDRESS: 63 Masters Avenue S.E.
HOURS: Monday to Thursday 2 to 8 p.m., weekends and holidays noon to 5 p.m.

For more information, visit
www.sabalhomes.com

Each rear-attached home is available in distinct elevations, including Craftsman, Prairie, Arts & Crafts, and Modern Country.

Each rear-attached home is available in distinct elevations, including Craftsman, Prairie, Arts & Crafts, and Modern Country. Premium exterior materials are used, ranging from Stucco to fibre cement siding (Hardie board siding and shingle), high quality trim for longevity and low maintenance, accents of stone or brick, and stately front doors to highlight the character front porch.

These homes will fit right in with Mahogany's fun, family-friendly character. "We think that the buyer for these homes puts a focus on character-style and lower-maintenance living in one of Calgary's best communities," she adds. Sabal's rear-attached garage homes start from the \$520,000s.

She says Sabal has seen interest from inner city couples "looking for something larger but not cookie cutter; older couples looking to downsize; and young families who are looking to take advantage of everything Mahogany has to offer."

The first home sites are ideally situated across the street from the Wetland Preserve, affording a number of lots a beautiful view of the wetlands from the front door. Also within walking distance is the Mahogany Beach Club and Central Beach, a main focal point in the community, offering residents swimming, boating, paddle boarding, fishing, beach volleyball and much more. ■

